

SHEET
002

Print File
ARCHIVAL PRESERVES

WWW.PRINTFILE.COM

TYPE NO. 242-20F

DATE:

ASSIGNMENT:

Mirza Dickle Lüneberg - Lübeck 2/3



SHEET
003

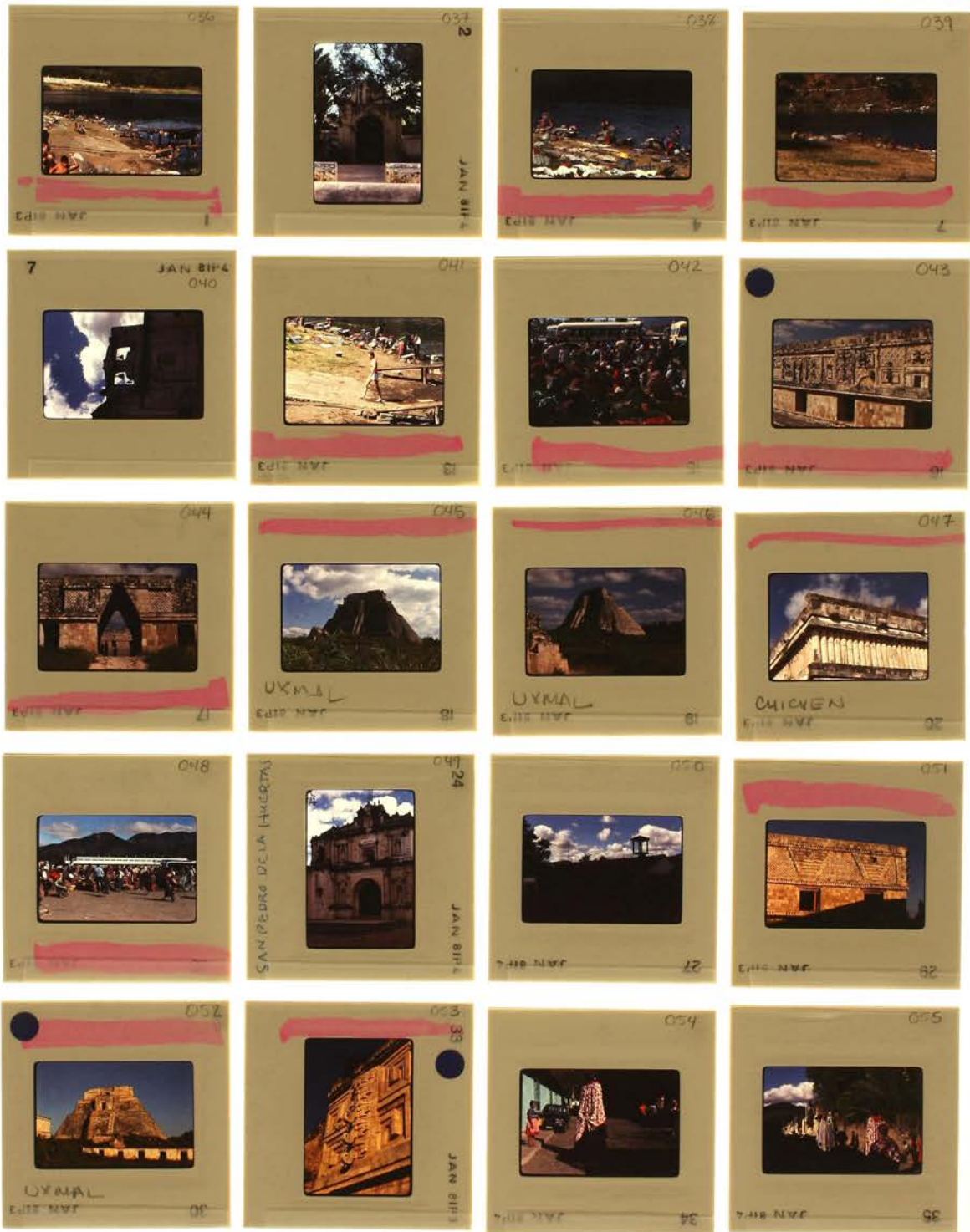
Print File
ARCHIVAL PRESERVERS
DATE: _____
SERIAL NUMBER: _____

WWW.PRINTFILE.COM

YUCATANI - Mirza Dickle

ROLL NO: 11-2-208

1/2



8488 T
004

Print File
ARCHIVAL PRESERVERS
DATE

WWW.PRINTFILE.COM

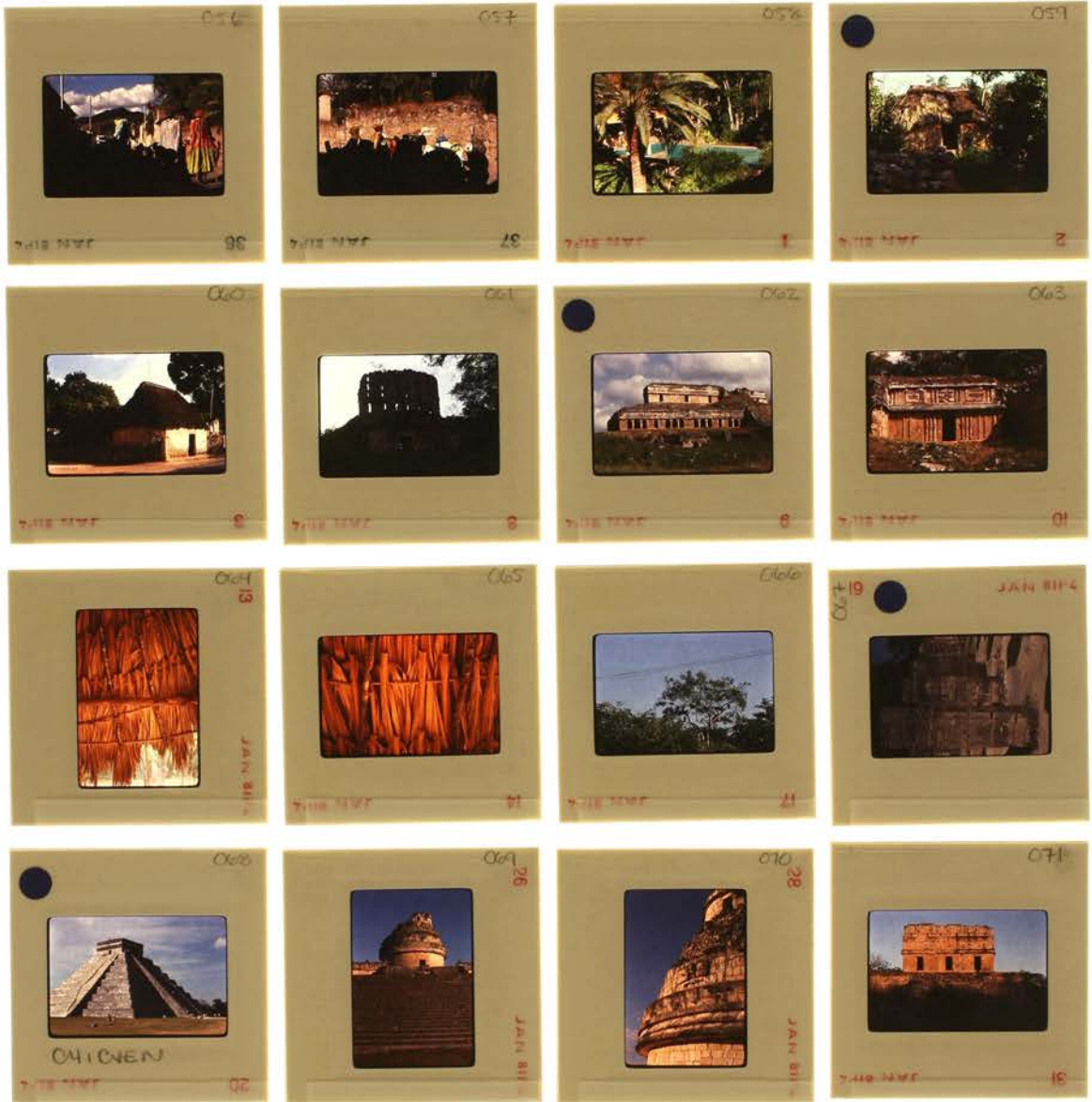
ASSIGNMENT:

Yucatan - Mirza Dickle

STRIP NO. 1x2-998

FILE NO.:

2/2



SHEET
005

Print File

PHOTO PRESERVER

DATE:

WWW.PRINTFILE.COM

ASSIGNMENT:

GUATAMALA - Mirza Dickle

FILE NO. 243-208

FILE NO. 1/2



SHEET
006

Print File
ARCHIVAL PRESERVERS

WWW.PRINTFILE.COM

ASSIGNMENT:

Guatemala - Mirza Dickle

ORDER NO. 2x2-205

REF NO. 2/2



SHEET
007

Print File
ARCHIVAL PRESERVATION
DATE

WWW.PRINTFILE.COM
ASSIGNMENT:

MEXICO CITY - Mirza Dickle
1966

STIP #0 043-208
FILE #00
1/5



SHEET
008

Print File
ARCHIVAL PRESERVATION
DATE:

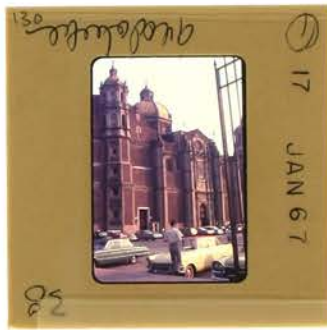
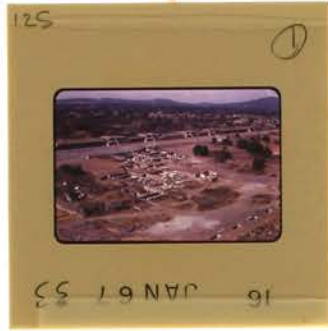
WWW.PRINTFILE.COM

ASSIGNMENT: MEXICO CITY - Mirela Dickle
#66

STYLE NO: 242-798

FILE NO:

245



SHEET
009

Print File
ARCHIVAL PRESERVERS

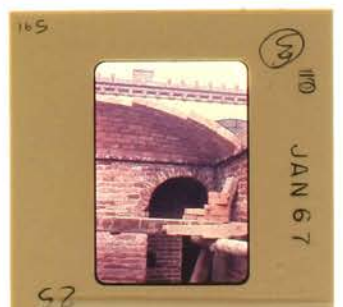
WWW.PRINTFILE.COM

DATE:

ASSIGNMENT:

MEXICO CITY - Mirza Dickle
1966

315
FILE #



SHEET
010

Print File
ARCHIVAL PRESERVATION

WWW.PRINTFILE.COM

MEXICO CITY - Mirza Dickle
1966

TYPE NO. 2x2-205
4/5
FILE NO.



SHEET
011

Print File
ARCHIVAL PRESERVERS

DATE:

WWW.PRINTFILE.COM

ASSIGNMENT:

MEXICO CITY - Mirza Dickle
1966

ESTIMATED 1-3-200

S 15

FILE NO:



SHEET
012

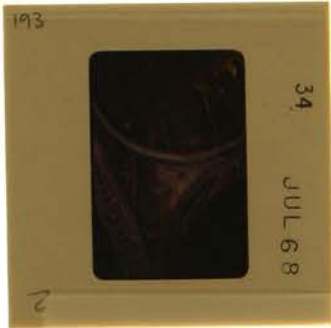
Print File
ARCHIVAL PRESERVERS

WWW.PRINTFILE.COM

VENICE - Mirza Dickle
1968

STYLE NO. 7x2-20X

TITLE NO. 1/2



SHEET
013

Print File
ARCHIVAL PRESERVERS

WWW.PRINTFILE.COM

ASSIGNMENT:

VENICE - Mira Dickle
1968

STYLE NO. 2x2-208
2/2
FILE NO.



SHEET
014

Print File
ARCHIVAL PRESERVERS
DATE:

WWW.PRINTERX.COM

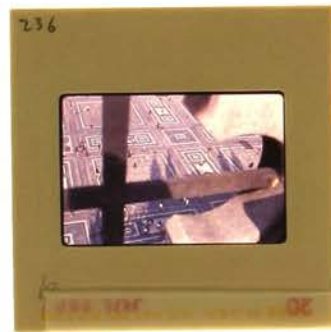
ASSIGNMENT:

MILAN - Mirena Dickle
1968

STYLE NO. 2x2-208

FILE NO:

1/2



SHEET
015

Print File
ARCHIVAL PRESERVERS
DATE:

WWW.PRINTFILE.COM
ASSIGNMENT:

MILAN - Mirza Dickle
1968

FORM NO. 1-0-208
2/2
REV. 1/88



SHEET
016

Print File
ARCHIVAL PRESERVATION
DATE:

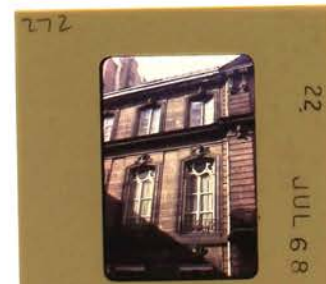
WWW.PRINTFILE.COM

ASSIGNMENT:

FRANCE - Mirna Dickle
1968

STYLE NO. 249-508

1/2
SHEET NO.



SHEET
017

Print File®
ARCHIVAL PRESERVERS

WWW.PRINTFILE.COM

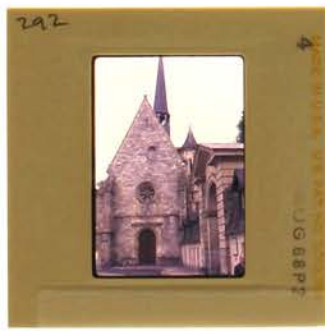
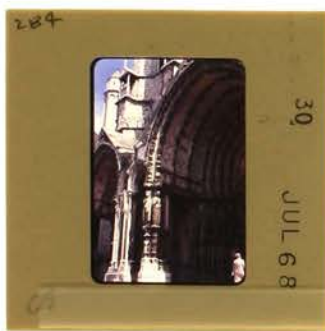
DATE:

ASSIGNMENT:

FRANCE - Miran Dickle
1968

FILE NO. 242-209

2/2
FILE NO.



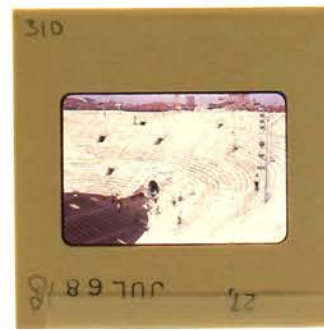
SHEET
018

Print File
ARCHIVAL PRESERVES
DATE:

WWW.PRINTFILE.COM
ASSIGNMENT:

TORCELO/NERONA-Milsa Dickel
1968

STYLE NO. 212-200
1/2
REF. NO.:



SHEET
019

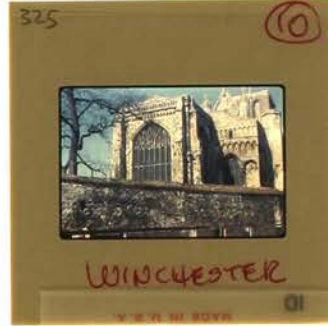
Print File
ARCHIVAL PRESERVERS
DATE

WWW.PRINTFILE.COM
ASSIGNMENT:

TORCELLO/VERONA - Mirza Dickle
1968

DATE: 07-20-2005
FILE: 1101







338

23

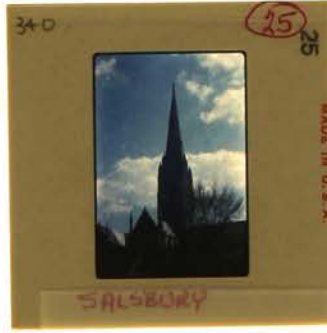
SALSBURY



339

24

CLOSE SALSBOYP



340

25

SALSBURY



341

26

WEST of SALSBOYP



342

27

WEST of SALSBOYP



343

29

TOLPUDDLE



344

30

NEAR WHITE REGIS



345

31

NEAR AXMOUTH



346

33

GARDEN of WARBOUR 110W

AXMOUTH



347

33

1746 Planted - 580 yds. long 85' high

PERTH



348

34

GARDEN of WARBOUR 110W

AXMOUTH



349

35

WARBOUR 110W

AXMOUTH



350

36

AXMOUTH



351

1

DEVON



352

3

SIR FRANCIS DRAKE

PLYMOUTH HOE



353

4

PLYMOUTH HOE



354

1

FIVE ARMS

BIREHALL



355

2

BIREHALL



356

3

IN VIZ CAUD

BIREHALL



357

4

WYU of DEE

BIREHALL

SHEET
022

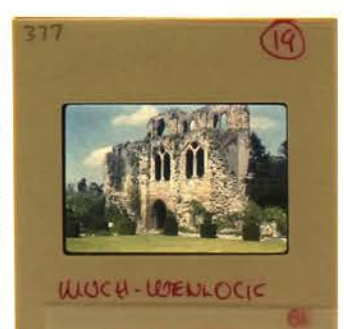
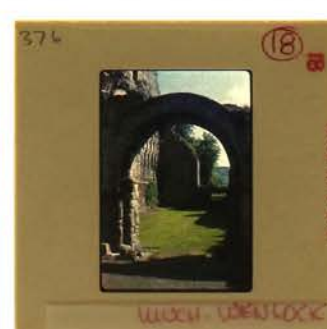
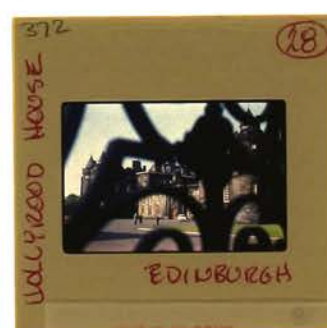
Print File
ARCHIVAL PRESERVERS
DATE:

WWW.PRINTFILE.COM
ASSIGNMENT:

ENGLAND - Mirza Dickle
1960

3/8

STYLE NO. 2-2-205
TOP W/O:



SHEET
023

Print File
ARCHIVAL PRESERVERS
DATE

WWW.PRINTFILE.COM
ASSIGNMENT

ENGLAND - MIRA DICKLE
1960

4/8

PRINT NO. 2x2-998
FILE NO.



SHEET
024

Print File
ARCHIVAL PRESERVERS

WWW.PRINTFILE.COM

ENGLAND - Mirra Dickle
1960

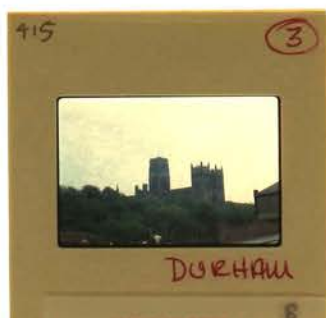
DATE:

ASSIGNMENT:

5/8

STYLE NO. 199-205

PH. NO.:



SHEET
025

Print File
ARCHIVAL PRESERVATION
DATE:

WWW.PRINTER5.COM

ENGLAND - Minna Dickie
1960
ASSIGNMENT:

STYLE NO. 2x2-208

6/8

FILE NO.:



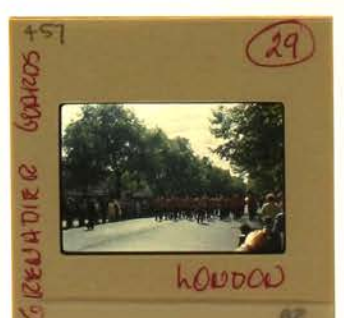
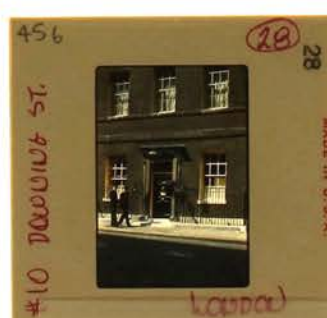
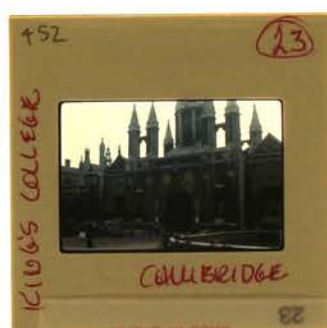
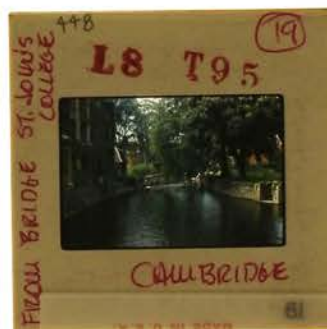
SHEET
026

Print File
ARCHIVAL PRESERVERS
DATE:

WWW.PRINTFILE.COM
DESIGNMENT:

ENGLAND - Mirela Dickle
1160

7/8
SERIES NO. 2x2-200
T. NO.



SHEET
027

Print File
ARCHIVAL PRESERVERS

WWW.PRINTFILE.COM
DATE:
ASSIGNMENT:

ENGLAND - MURDER DICKIN
1960

8/8 FILE NO. 2x2-208
FILE NO.





SHEET
029

Print File
ARCHIVAL PRESERVERS
DATE:

WWW.PRINTFILE.COM
ASSIGNMENT:

COPAN MEXICO CITY - Miran Dickle
1970s

STYLE NO. 202-208
Z
FILE NO.



SHEET
030

Print File
ARCHIVAL PRESERVERS
DATE:

WWW.PRINTFILE.COM
ASSIGNMENT:

SAN MIGUEL - Mireya Dickle
1970s

FILE NO. 3-2-208
FILE NO.



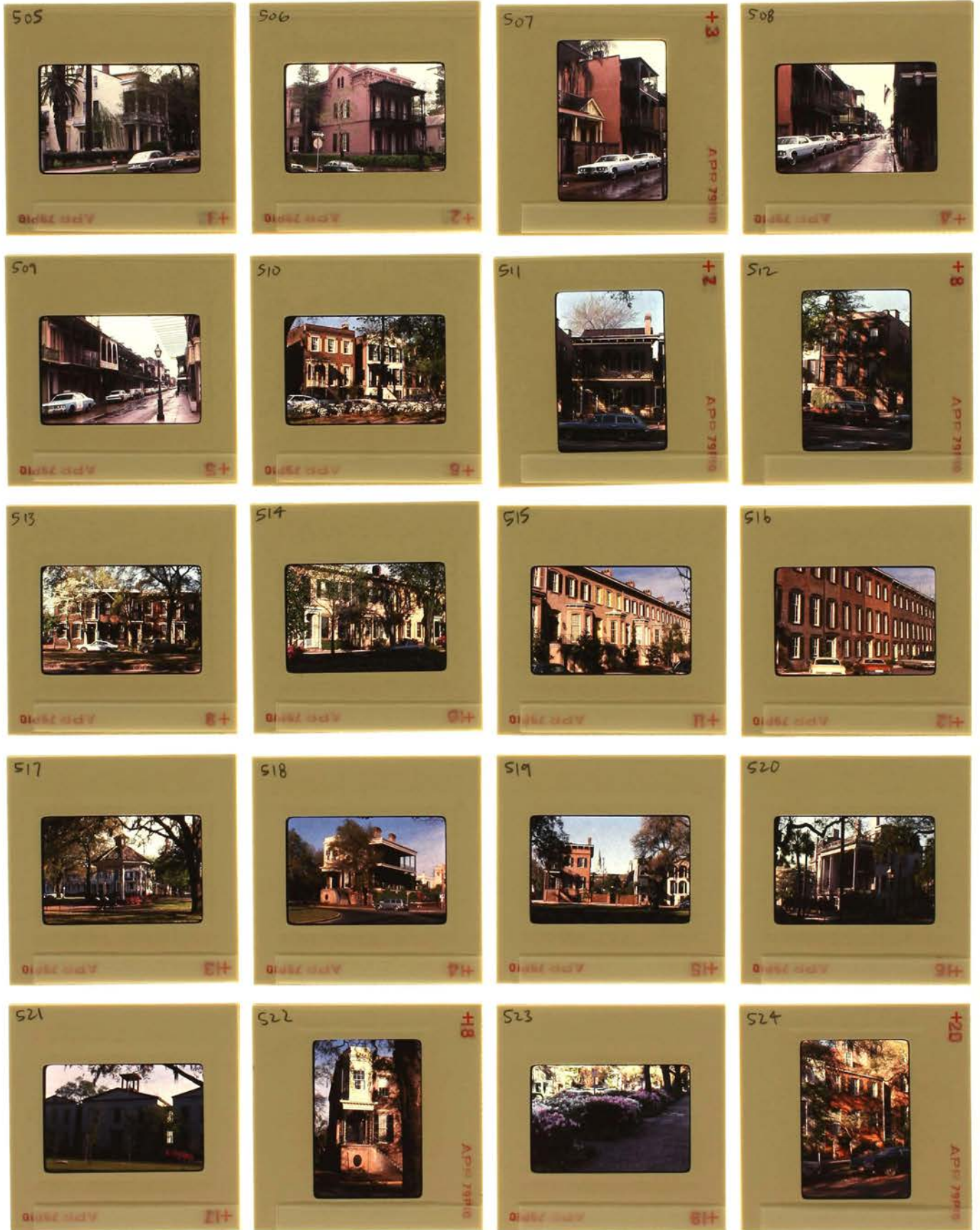
SHEET
031

Print File
ARCHIVAL PRESERVERS
DATE:

WWW.PRINTFILE.COM

SAVANNAH, GA - Mirra Dickle
ASSIGNMENT:
1970s

1/2
2008



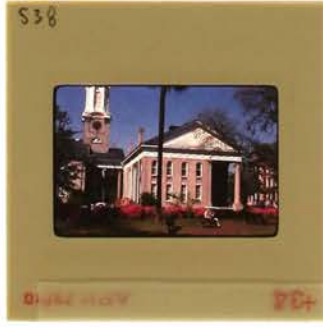
SHEET
032

Print File®
ARCHIVAL PRESERVES
DATE:

WWW.PRINTERS.COM

SWANNAH, GA - Mirza Dickle
ASSIGNMENT:
1970s

0715 101 1-2-208
2/2
THE NO:



SHEET
033

Print File
ARCHIVAL PROCESSORS
DATE:

WWW.PRINTFILE.COM
SAN CRISTOBAL - Mirra Dickle
ASSIGNMENT:
1970s

STY. NO. NR-206
1/3
RLL. NO.



SHEET
034

Print File
ARCHIVAL PRESERVERS
DATE:

WWW.PRINTFILE.COM

SAN CRISTOBAL - Mirza Dickie
1970s

STYLE NO. 122-008

2/3

FILE NO:



SHEET
035

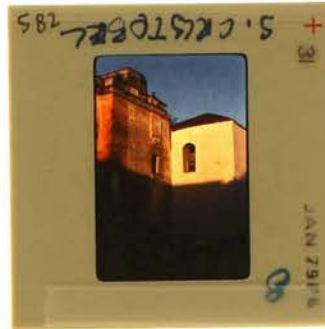
Print File®
ARCHIVAL PRESERVERS
DATE:

WWW.PRINTFILE.COM

SAN CRISTOBAL-MIRBA DICKLE
1910s

ASSIGNMENT:

313
REF NO.



Sheet
037

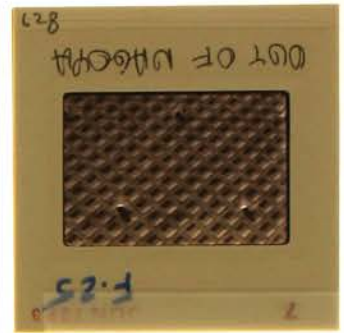
Print File
ARCHIVAL PRESERVERS

WWW.PRINTFILE.COM

JAPAN - MIRA DICKLE
1970s

ROLL NO. 205-209
2/5
TIF NO.





Sheet
039

Print File
ARCHIVAL PRESERVERS

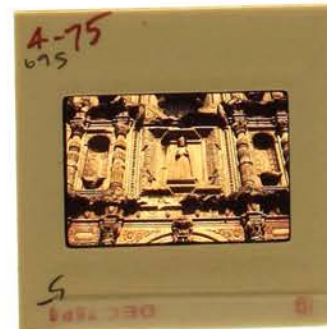
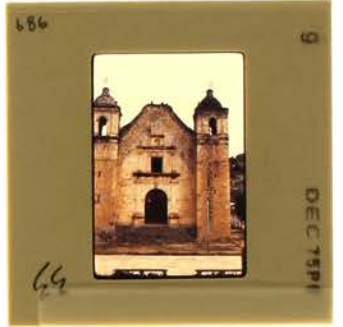
WWW.PRINTFILE.COM

JAPAN-Mirza Dickle
1970s

Sheet No. 039-208
4/5
FILE NO.







HGGT
042

Print File
ARCHIVAL PRESERVES

WWW.PRINTFILE.COM
DATE: ASSIGNMENT:

MEXICO - Mirsa Dickle
1970:

2/6





739

1 +



740

2 +



741

3 +



742

4 +



743

5 +



744

6 +



745

7 +



746

8 +



747

9 +



748

10 +



749

11 +



750

12 +



751

13 +



752

14 +



753

15 +



754

16 +



755

17 +



756

18 +



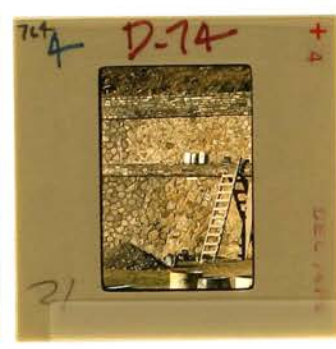
757

19 +



758

20 +



SHEET
045

Print File
ARCHIVAL PRESERVES
DATE: _____

WWW.PRINTFILE.COM

ASSIGNMENT: _____

MEXICO - Miren Dickle
1970s

PRINT NO. 000-000
6/6
FILE NO. _____



SHEET
046

Print File
ARCHIVAL PRESERVERS
DATE: _____

WWW.PRINTFILE.COM

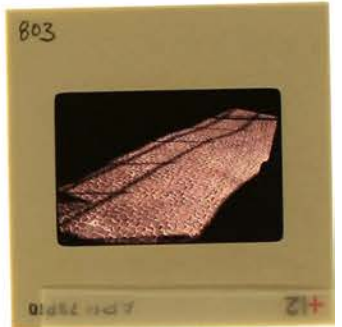
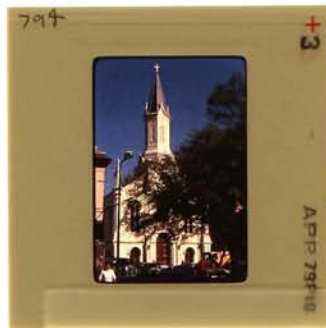
ASSIGNMENT: _____

SAVANNAH, GA - Mrs. Dickie
1979

STRIP NO. 2x2-308

FILE NO. _____

1/2



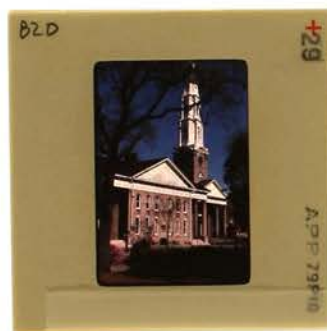
SHEET
047

Print File
ARCHIVAL PRESERVES

WINDY CITY PHOTO CO.
ASSIGNMENT:

SAVANNAH, GA - MIRZA DICKIE
1979

STYCE REF. 300-200
2/2
FILE NO.



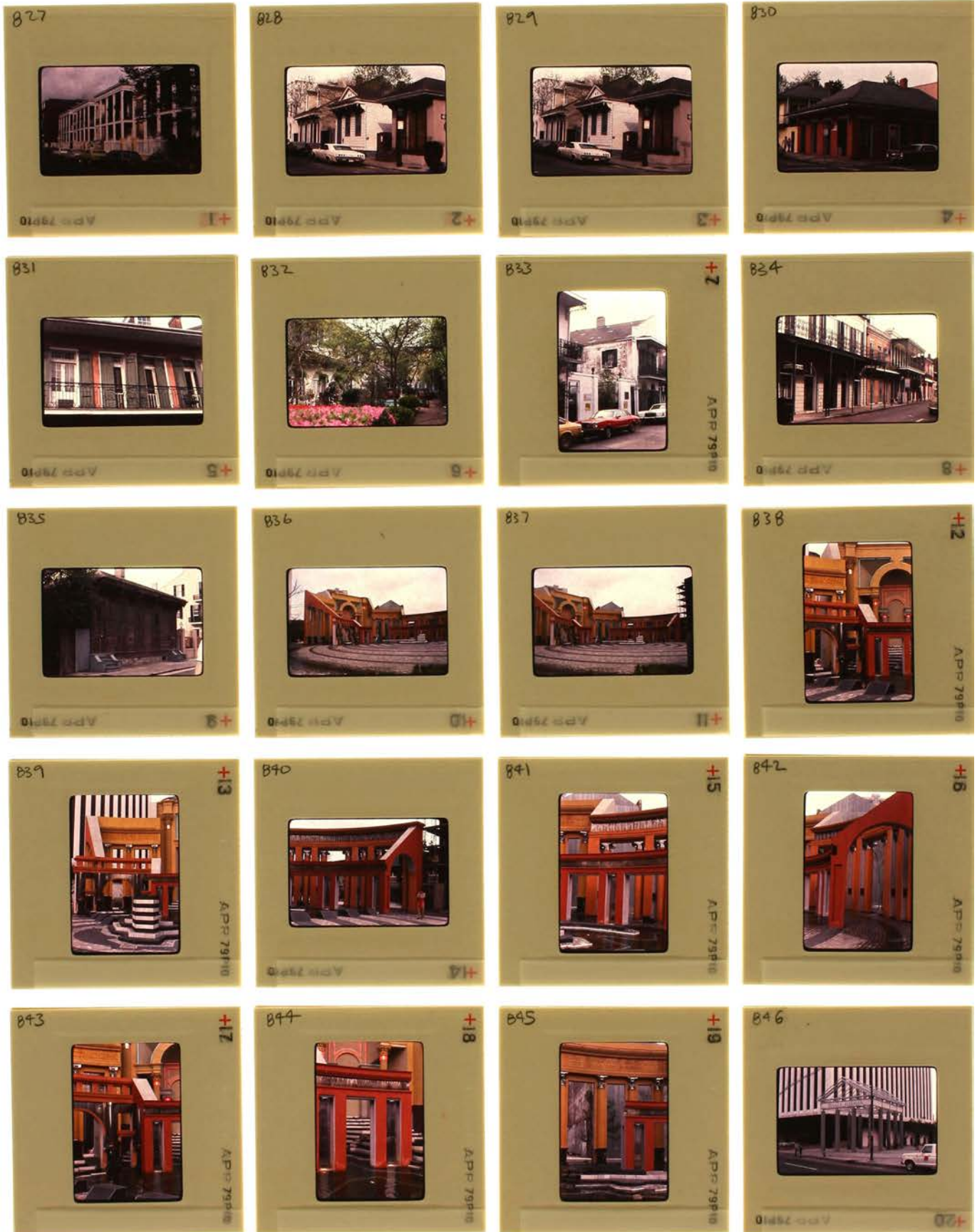
SHEET
048

Print File
ARCHIVAL PRESERVERS
DATE:

WWW.PRINTFILE.COM
ASSIGNMENT:

NEW ORLEANS - Mira Dickle
1979

STYLE NO. 242-205
1/2
REF. NO.



SHEET
049

Print File
ARCHIVAL PRESERVERS

WWW.PRINTFILE.COM

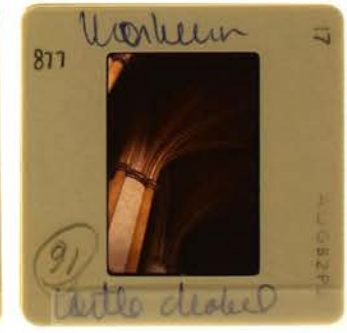
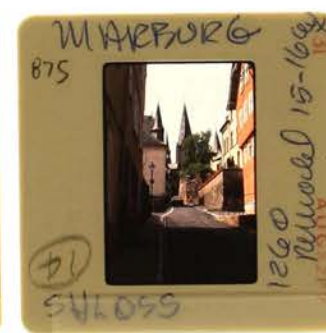
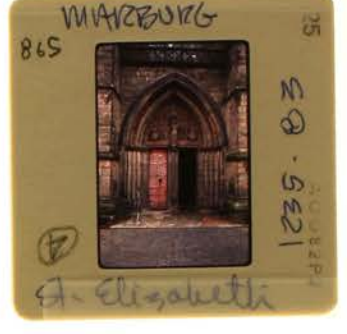
NEW ORLEANS - Mirela Dickle
1979

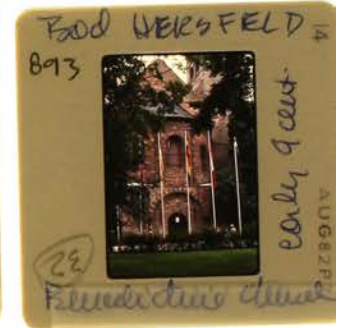
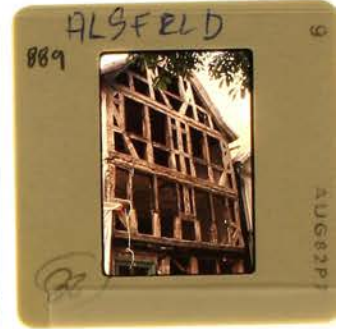
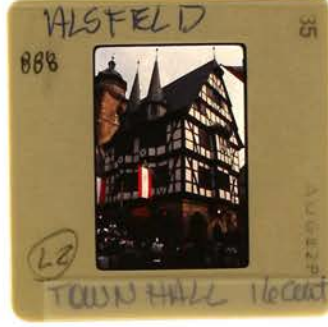
DATE:

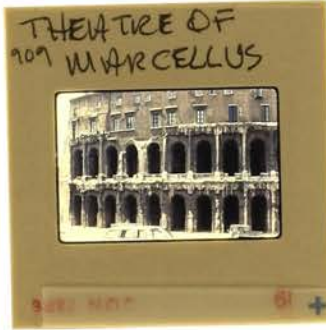
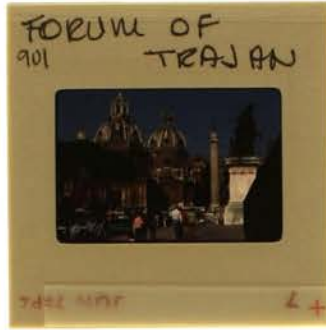
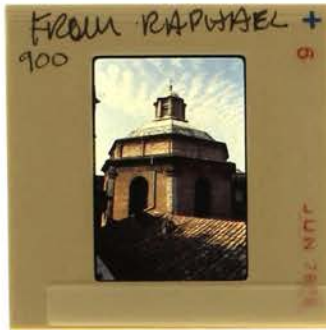
ASSIGNMENT:

FORM NO. 2x5-208
2/2
FILE NO.











SHEET
054

Print File
ARCHIVAL PRESERVERS
DATE:

WWW.PRINTFILE.COM
ASSIGNMENT:

ROME - Miron Dickle
1978

STYLE NO. 252-205
3 / 3
SEE NO.



SHEET
055

Print File
ARCHIVAL PRESERVES
DATE:

WWW.PRINTFILE.COM

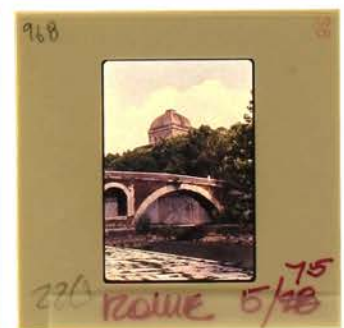
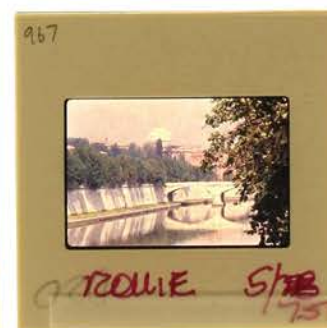
ASSIGNMENT:

ROME - Mirra Dickle
1975

SEITE NO. 2-2-209

FILE NO.

1/3





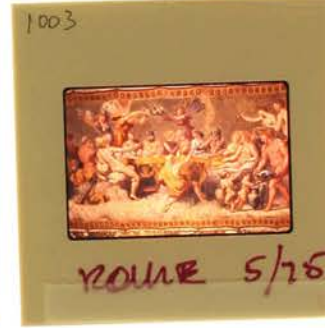
SHEET
057

Print File
ARCHIVAL PHOTOGRAPHERS
DATE: _____
DESIGNER/PRINT: _____

WWW.PRINTFILE.COM

ROME - Mirela Dickle
1975

STILL NO. 7-2-208
3/3
ROLL NO.



SHEET
058

Print File
ARCHIVAL PRESERVERS
DATE: _____

WWW.PRINTFILE.COM
ASSIGNMENT: _____

COMO-MIRBA Dickel
1975

TYPE NO. 208
1/2
FILE NO. _____





SHEET
060

Print File
SERIALS DEVELOPMENT

WWW.PRINTFILE.COM

ASSIGNMENT:

VENICE - Mirza Dickl
1975

SPRINT NO. 2-2-208

SHEETS

1040



5/75

1041



5/75

1042



5/75

1043



5/75

1044



5/75

Mirza Dickl
Venice
1045



5/75

1046



5/75

1047



5/75

1048



5/75

1049



5/75

1050



5/75

1051



5/75

1052



5/75

1053



5/75

1054



5/75

1055



5/75